



FOR LEASE

High Visibility Retail Space on Howland Blvd

Howland Blvd & E Graves Ave | Deltona, FL 32725



High Visibility Retail Space on Howland Blvd

Howland Blvd & E Graves Ave | Deltona, FL 32725



2,500 SF
Available

Contact
Broker
Rate

ABOUT THE PROPERTY

- Prime retail space located near the intersection of Howland Blvd and E Graves Ave in Deltona, offering high visibility and excellent accessibility.
- Highly desirable commercial location in Deltona's fastest-growing area, with easy access to I-4, connecting Daytona Beach and Orlando.
- The Halifax Crossings area is fast becoming a central hub for retail, healthcare, and service businesses.
- Proximity to a diverse mix of national and local retailers, including: Publix Supermarket, Chick-fil-A, Walmart Supercenter, AdventHealth, Starbucks, Taco Bell, McDonald's and many more.

JOIN THESE RETAILERS



PROPOSED TENANTS



TRAFFIC COUNTS

Howland Blvd
I-4

35,500 VPD
195,000 VPD

Year: 2024 | Source: FDOT



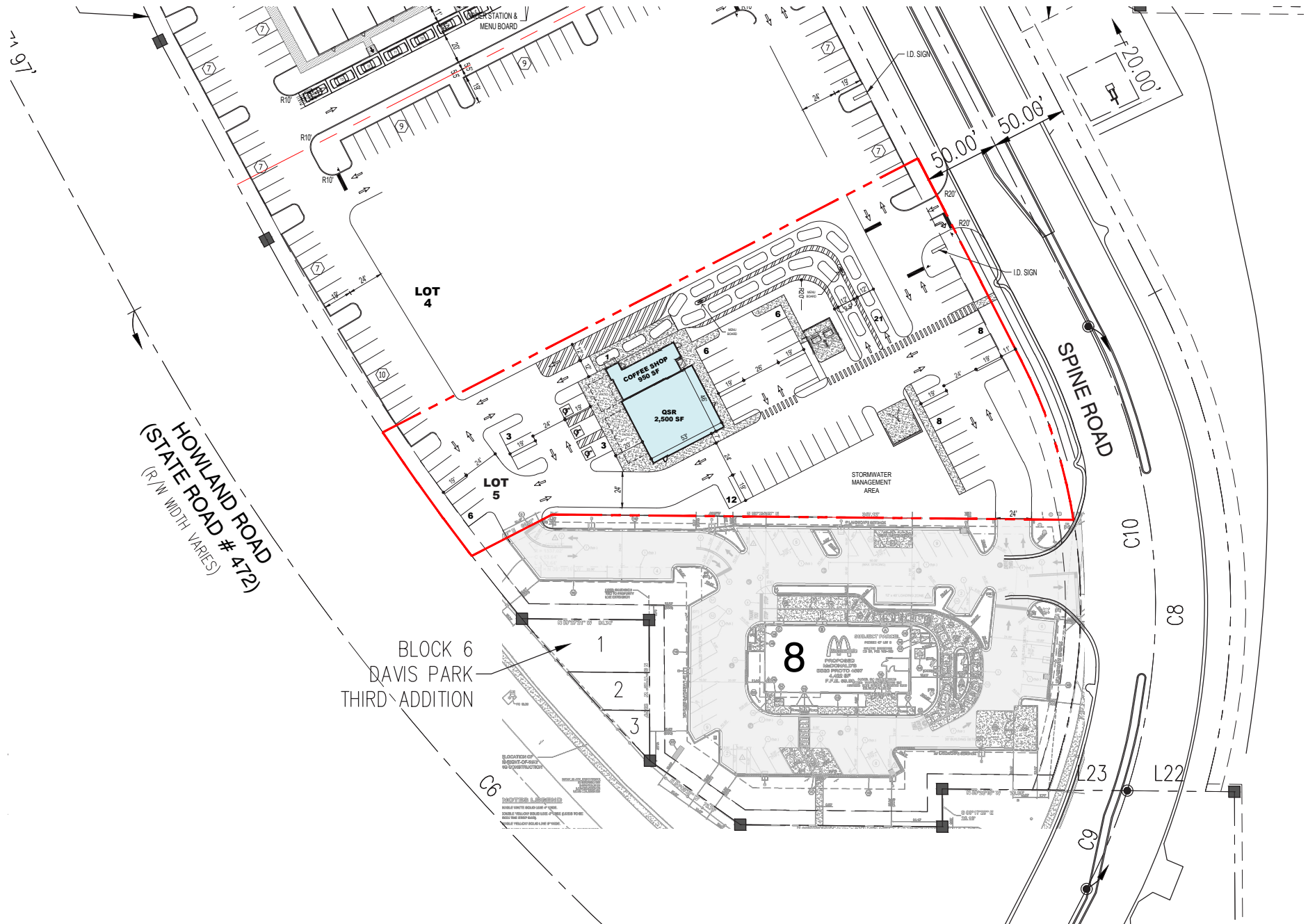
Deltona, FL





High Visibility Retail Space on Howland Blvd

Howland Blvd & E Graves Ave | Deltona, FL 32725



High Visibility Retail Space on Howland Blvd

Howland Blvd & E Graves Ave | Deltona, FL 32725



DEMOGRAPHIC HIGHLIGHTS

1 MILE

3,862	2,915	\$86,072	1,406
Population	Total Daytime Population	Average Household Income	Total Households

3 MILES

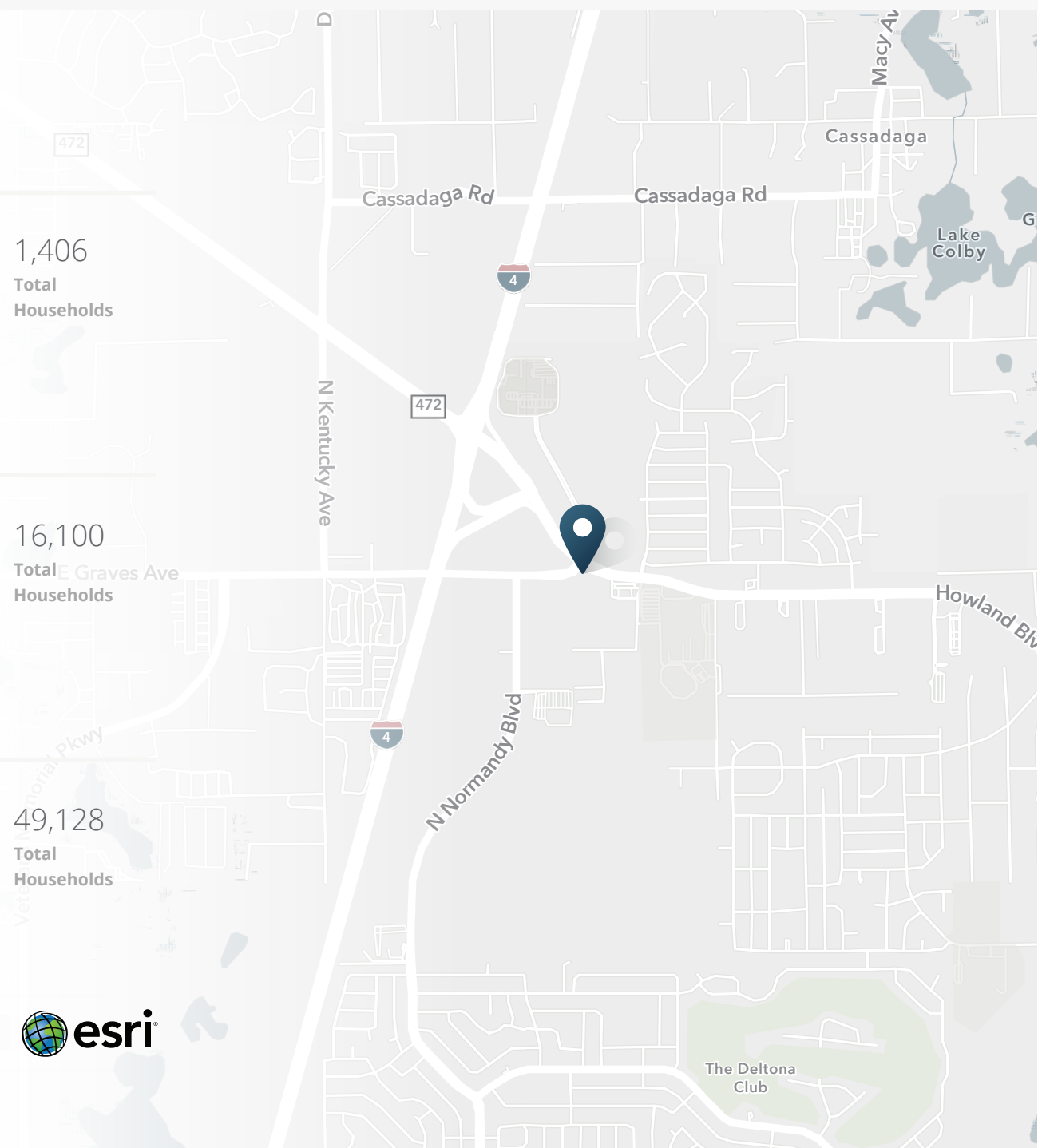
41,234	31,692	\$100,244	16,100
Population	Total Daytime Population	Average Household Income	Total Households

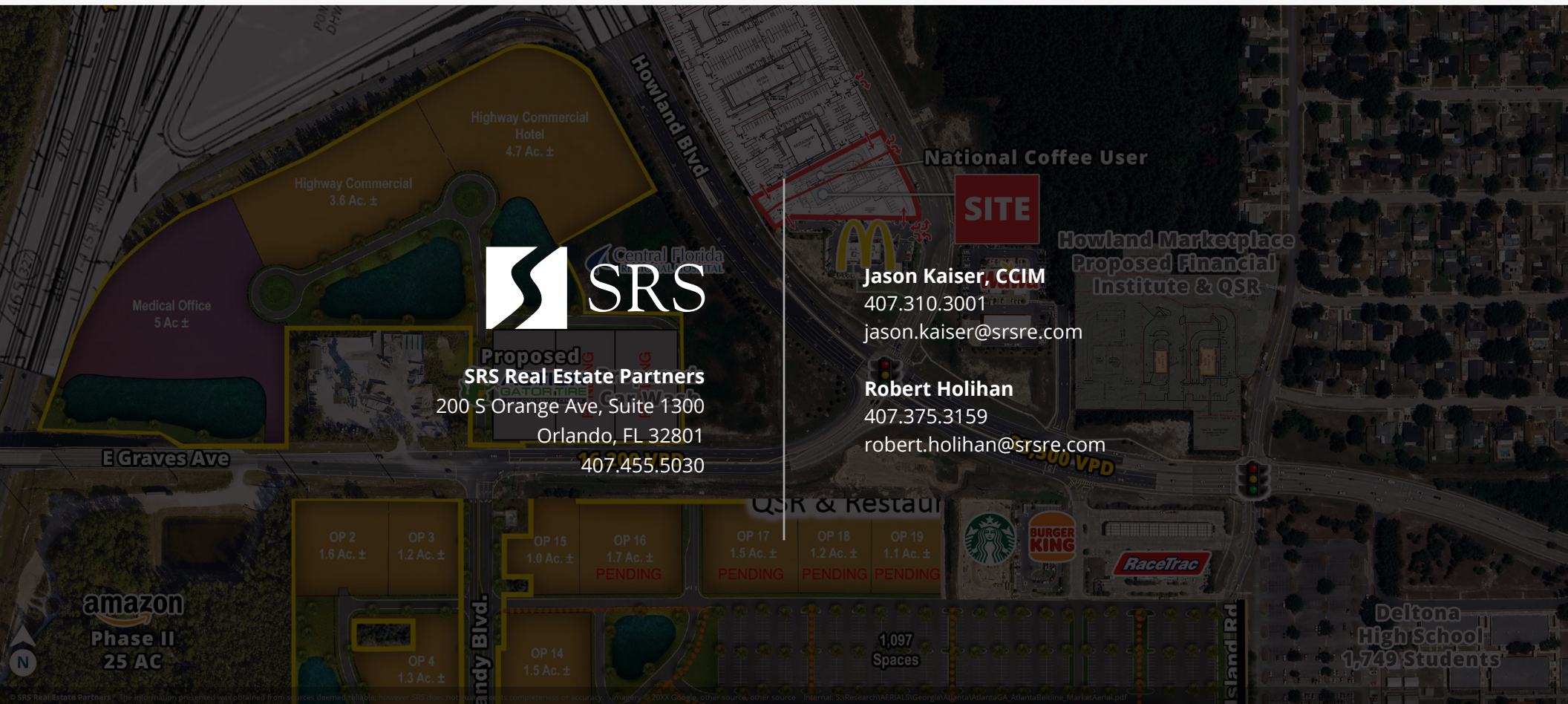
5 MILES

127,828	98,708	\$96,993	49,128
Population	Total Daytime Population	Average Household Income	Total Households

> **Want more?** Contact us for a complete demographic, foot-traffic, and mobile data insights report.

SOURCE





SRSRE.COM

© SRS Real Estate Partners

The information presented was obtained from sources deemed reliable;
however SRS Real Estate Partners does not guarantee its completeness or accuracy.